

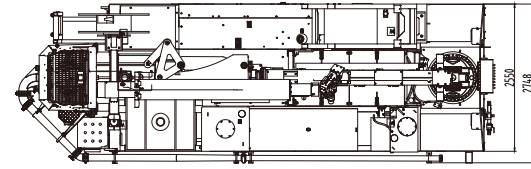
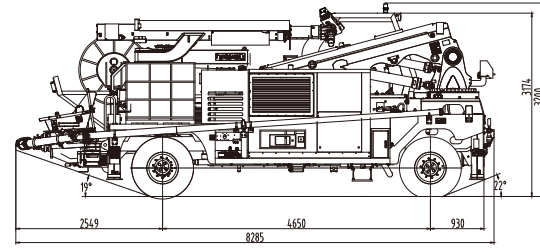
Technical specification for SPJ3217KAIN

	Total weight (kg)	18500(including air compressor)
	Overall dimensions (driving/transportation)(L×W×H)(mm)	Driving: 8285×2750×3200 Transport: 8285×2550×3200
	Power (kW)	Main motor 55KW + air compressor 75KW
Chassis	Type	Engineering chassis
	Engine	Type YC4DK130-T306 Rated power (kW/rpm) 96/2200 Exhaust emission standard Non road Chinese III
	Hill-climbing ability (%)	40%
	Turning radius (m)	7.2
Pumping system	Maximum speed (km/h)	22
	Minimum ground clearance (mm)	450
	Capacity (m³/h)	32
	Aggregate particle size of shotcrete (mm)	16
	Concrete conveying pressure (MPa)	8
	Concrete cylinder diameter × stroke (mm)	Φ180×1000
Manipulator	Diameter of main cylinder (mm)	Φ110
	Hopper volume (m³)	0.35
	Height of hopper feeding (m)	1.5
	The maximum working range (m)	Upward 17.5 Forward 15 Width 30
	Big arm rotation angle (°)	270°
	Upper arm pitch range (°)	+60° / -23°
	Telescopic range of big arm (m)	2
	Angle of forearm rotation (°)	180° / 60°
	Forearm pitch range (°)	+30° / -62°
	Telescopic range of forearm (m)	2
Air compressor	Axial rotation range of nozzle seat (°)	360°
	Axial swing range of nozzle seat (°)	+120° / -120°
	Mode of operation	Remote control
	Conveying pipe diameter(mm)	Φ80
Admixture pump	Model	SG75M
	Motor power (KW)	75
	Air volume (m³/min)	13
	Wind pressure (MPa)	0.8
	Model	Balflex 20
	Type	Hose pump
	Motor power (kW)	0.75
	Metering and conveying capacity (L/h)	80-800
	Maximum conveying pressure (MPa)	12

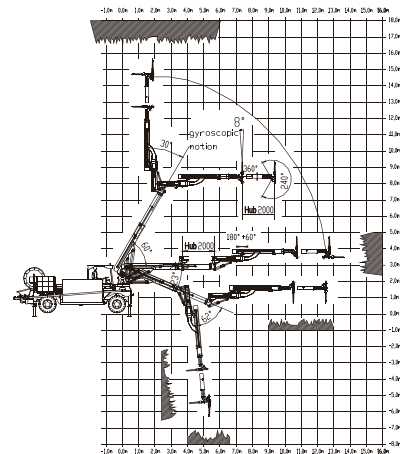
Main Configuration of SPJ3217KAIN

No.	Description	Manufacturer/ Brand	Country of origin
1	Axle	Kaichuang	China
2	Engine	Yuchai	China
3	Walking Motor	Danfoss	China
4	Main Traveling Pump	Danfoss	China
5	Arm Frame	Sany	China
6	Admixture Pump	Balboa	France
7	Cable Drum	DouWen	China
8	Swing Mechanism	Sany	China
9	Rotary Supporting	Sany	China
10	Reduction Gear	Sany	China
11	Water Pump	ShenLong	China
12	Conveyance Cylinder	Sany	China
13	S-valve Assembly	Sany	China
14	Main Oil Pump	Hangzhou Lilong	China
15	Arm Support Pump	Hangzhou Lilong	China
16	Gear Pump	Fuxin Beixing	China
17	Cylinder	Sany	China
18	Multiple Valve Of Boom	Radk-tech	China
19	Mixing Motor	Sany	China
20	Controller	Sany	China
21	Display	Sany	China
22	Wireless Remote Control System	Sany	China
23	Air compressor	Aisensi	China

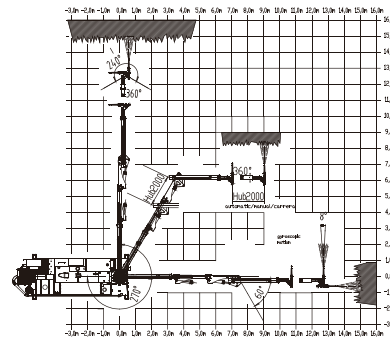
* The product configuration (including technical parameters) is subject to change and the delivered actual machine without notice.



DIMENSIONS



VERTICAL SPRAYING REACH



HORIZONTAL SPRAYING REACH



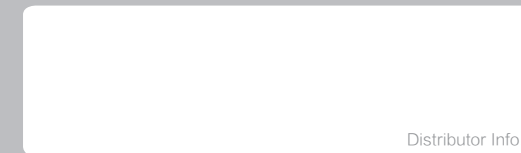
品质改变世界
QUALITY CHANGES THE WORLD



SANY HEAVY INDUSTRY CO., LTD.

SANY Industry Town, Changsha Economic and Technological
Development Zone, Hunan Province, China
Service Line: +86 4006 098 318
E-mail: crd@sany.com.cn

www.sanygroup.com



Distributor Info.

Due to our process of continuous innovation, materials and specifications are subject to change without notice.

SPJ3217KAIN

Concrete Spraying Equipment

SPJ3217KAIN

SANY Concrete Spraying Equipment

SPJ3217KAIN is a concrete spraying machine that ensures high production, precise and safe concrete spraying in medium and large tunnels and galleries including slopes. It has an accurate and rapid spray manipulator positioning, high pumping efficiency, automatic synchronization of the additive dosing with the concrete flow.



Agility

The spray boom can be deployed in a minimum tunnel cross section due to efficient articulated telescopic design.

Maneuverability

4W steering/driving allows flexible maneuvering and easy access in UG spaces.

High efficiency

Very large spray boom coverage and very high shotcrete output.

Low-energy

Innovative hydraulic components reduces cost and increases efficiency.

1

STRONG VERSATILE CARRIER

Cabin

180° rotation, the cabin allows for maximum visibility in any situation

Dana axles

Service brake and Parking brake ensure safe travelling

Chassis

4WS, 4WD, crab mode and two directional drive



2

INTELLIGENT MONITORING AND RELIABILITY

Intelligence

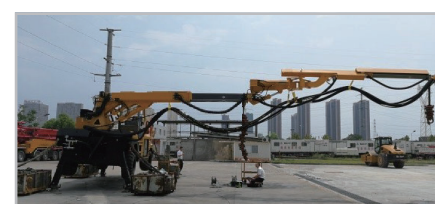
Automatic synchronization of accelerator dosage and concrete flow

Automation

The spray lance automatically maintains horizontal alignment

Reliability

Pentagonal cross section of boom provides sturdiness, stability and durability



3

VERSATILE SPRAY BOOM AND SPRAY HEAD SYSTEM

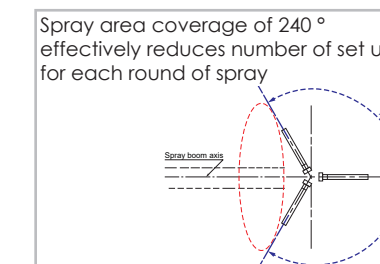
Accurate

Advanced control system and hydraulic systems provides accurate and precise shotcrete boom and nozzle control



Flexible

Spray boom has 9 axes/degree of freedom



High Quality

Innovative shotcrete nozzle systems ensures the optimized mix of concrete/accelerator/air



4

INNOVATIVE HYDRAULIC VALVE TECHNOLOGY

Hydraulic pressure loss decreases due to innovative cast type hydraulic valves. The hydraulic flow reversing impact is decreased by 10%.



Saving energy, increasing the lifetime of hydraulic parts by 10%



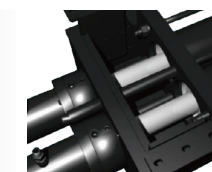
5

HIGHLY EFFECTIVE PUMPING TECHNOLOGY

Highly effective pumping technology with max. concrete flow of 32 m³/h. High performance, high efficiency



Concrete pump design optimizes the concrete transport cylinders' filling ratio



6

EMERGENCY FEATURES SOLVE YOUR IMMEDIATE PROBLEMS

Emergency systems allows for swift and effective support in the case of loss of electric power.

Emergency features enables operation of all main functions in cleaning/de-mobilizing the machine without electric power supply.

- Operate spray boom functions
- Operate support legs
- Move s-tube
- Operate cable reel
- Operate high pressure washer
- Move concrete pump pistons

